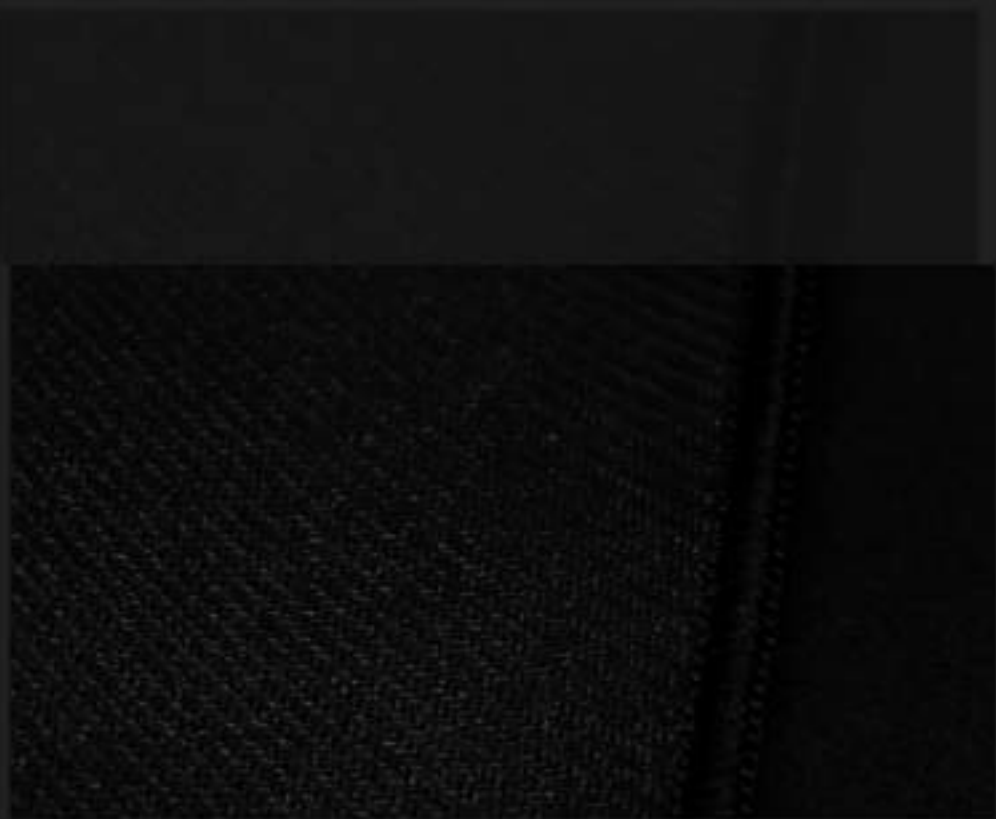


TOTAL SPEED



SPEED-ORIENTED

Speed-oriented mouse pads are incredibly smooth and flat, so it feels like your mouse is slipping quickly across the entire surface with zero hindrance. TMP40 suits gamers who need to hit targets faster and more efficiently.



THE BASE

The base is made of anti-slip rubber of 4mm thickness to make sure the pad to stay where they should be during vicious game situations.



HIGH PERFORMANCE

This gaming grade mouse pad was designed for speed and fast response quality for both optical and laser mice.

TECH SPECS

| | |
|------------------|------------------|
| Model Name | TMP40 |
| Model | Speed type |
| Width (mm) | 400 |
| Length (mm) | 320 |
| Thickness (mm) | 4 |
| Surface material | Polyester fabric |
| Surface color | Black |
| Base material | Natural rubber |