



THUNDER

X3 | ED1

GAMING DESK

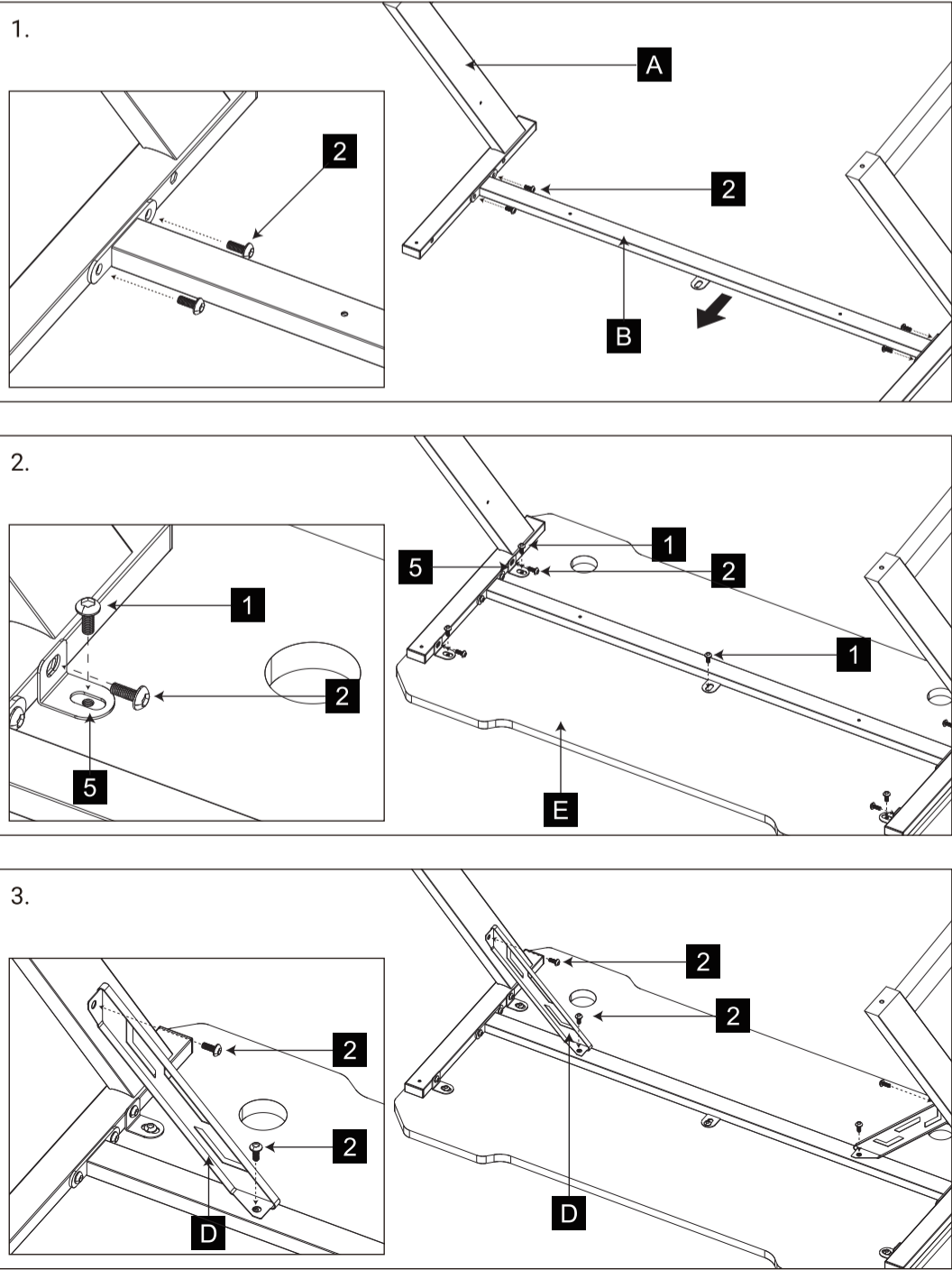


User's Manual

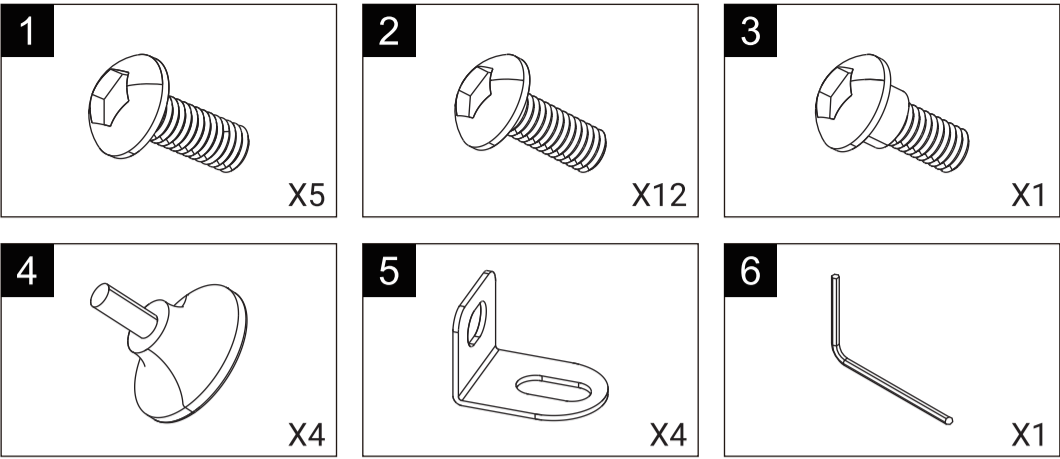
How to Assemble

Manual del usuario	Podręcznik użytkownika	ユーザーズマニュアル
Bedienungsanleitung	Руководство пользователя	нұсқаулары
Manuel d'utilisation	Manual de utilizador	Talimatlar
Manuale dell'utente	使用説明書 / 使用说明书	ຄຳນຳໃຊ້

How to install Guide



Accessory Bag Contents



Precautions:

1. Please pay attention to electrical safety. Should not be used by children without adult supervision.

2. Before operating the desk, please check to see if there are any obstacles near the table.

3. Desk should only be used for home or office use and should not be used for other purposes.

Desk Parts

